



## ACS Material Equipment Series

### InSitu Pro™ AECHO600SA

- |      |                        |
|------|------------------------|
| I.   | Product Composition    |
| II.  | Product Features       |
| III. | Product Specifications |

**Contact Information:**

ACS Material, LLC

Address: 959 E Walnut St., Suite 100

Pasadena, CA 91106, USA

Phone: (866) 227-0656

Fax: (781) 518-0284

E-Mail: [contact@acsmaterial.com](mailto:contact@acsmaterial.com)

Revision: 122724

## I. Product Composition

### 1) Main Unit

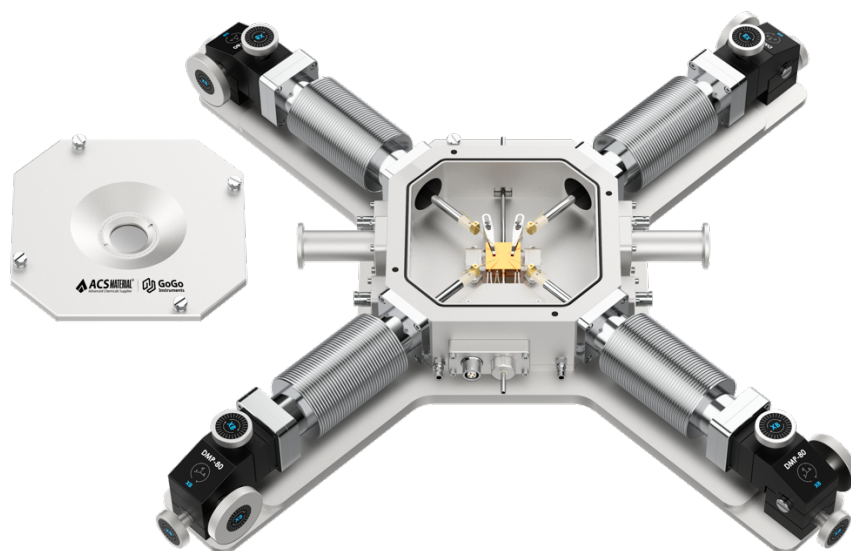


Photo of InSitu Pro™ AECHO600SA

## II. Product Features

The machine is a product designed for studying the variable temperature electrical properties of samples. It can characterize the changes in the electrical properties of samples with temperature variations. The product uses liquid nitrogen cooling and resistive heating to achieve precise temperature control within the range of -190 to 400°C. It can be integrated with other optical equipment (such as bridge circuit, source meter (SMU), multimeter) for in-situ temperature-variable testing.

The product needs to be used with a temperature controller and an optional cooling controller. The accompanying temperature control software on the host computer facilitates temperature setting and data acquisition. The provided LabVIEW VIs/C# SDK allows customers to perform customized programming.

### III. Product Specifications

InSitu Pro™ External Adjustment Probe Stage A- AECHO600SA					
SKU#	EIPOCHA1				
Temperature Control Module	Cooling And Heating Method	Liquid nitrogen cooling, resistive heating (Joule heating)	Structural Properties	Sample Stage Size	23x23mm *
	Temperature Control Range	-190 ~ 400 °C *		Sample Stage Material	Silver *
	Temperature Stability	±0.1°C ( -190 ~ -120 °C: ±0.3°C)		Overall Dimensions	430x430x60mm *
	Temperature Resolution	0.1°C		Sample Chamber Height	15mm *
	Heating and Cooling Rate	0~30°C /min (Programmable point control or segmented control), up to 150°C/min		Chamber	Vacuum*
	Temperature Control Method	PID		XYZ Displacement Range	±6mm
	Temperature Sensor	PT100		Probe Displacement Accuracy	1µm
	Probe	Adjustable probes x4, manual control *			
Optical Properties	Optical Path	Reflective optical path * (optional transmissive optical path)	Electrical Properties	Probe Connector Type	BNC interfaces x 4 *
	Window Material	Quartz glass (manually removable and replaceable) *		Sample Table Potential	Default electrical suspension *, optional electrical grounding
	Window Dimensions	Ø25mm *	Basic Configuration	1 main machine, 1 temperature controller, 1 cooling controller	

	Objective Working Distance	16.5mm *		(low-temperature configuration), 1 liquid nitrogen tank (low-temperature configuration), 1 water circulation system, and 1 temperature control software.
	Light Transmission Aperture	Default no light transmission * (optional with light transmission aperture)	Optional	Computer main unit / installation bracket / vacuum system / custom temperature control software.
	Window Defrosting	Airflow defrosting at sub-zero temperatures		
Note	All parameters above are default. Items marked with * are customizable.			

**Disclaimer:** ACS Material, LLC believes that the information in this Technical Data Sheet is accurate and represents the best and most current information available to us. ACS Material makes no representations or warranties either express or implied, regarding the suitability of the material for any purpose or the accuracy of the information contained within this document. Accordingly, ACS Material will not be responsible for damages resulting from use of or reliance upon this information.