



ACS Material Equipment Series

PressPro™ Four Cylinder Small Tonnage Powder Press Machine

- 1 – Product Composition
- 2 – Product Features
- 3 – Product Specifications
- 4 – Product Applications

Contact Information:

ACS Material, LLC

Address: 959 E Walnut St., Suite 100

Pasadena, CA 91106, USA

Phone: (866) 227-0656

Fax: (781) 518-0284

E-Mail: contact@acsmaterial.com

Revision: 050224

Product Composition

1. Main Machine
2. Molds - Optional



Photo of Press Machine

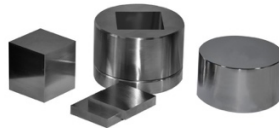


Photo of Optional Mold

Product Features

The 4 Cylinder Pointer Manual Pellet Press Series (SKU: EPPM4P) features stylish design, exquisite workmanship, and wide applicability. It can be paired with specific molds for use with calcium iron analysis, infrared spectroscopy (IR), and X-ray fluorescence (XRF) analyzers. Widely applied in research and development fields such as superconductors, batteries, powder metallurgy, advanced ceramics, building materials, cement, and chemical and pharmaceutical industries.

The 4 Cylinder Digital Display Manual Pellet Press Series (SKU: EPPM4D) is an upgrade of the original series hydraulic press, featuring a pressure display unit using the digital pressure gauge. It directly displays tonnage with a precision of 0.01t, making it ideal for users requiring high-pressure control accuracy.

Product Specifications

Product Name	PressPro™ Four Cylinder Small Tonnage Powder Press Machine							
Model	EPPM-4P15	EPPM-4D15	EPPM-4P24	EPPM-4D24	EPPM-4P30	EPPM-4D30	EPPM-4P40	EPPM-4D40
Pressure Range	0-15T (0-25MPa)	0.01-15.00T	0-24T (0-28.8MPa)	0.01-24.00T	0-30T (0-31.4MPa)	0.01-30.00T	0-40T (0-30MPa)	0.01-40.00T
Pressure Conversion	1Mpa=0.5T	-	1Mpa=0.7T	-	1Mpa=0.95T	-	1Mpa=1.33T	-
Piston Diameter	Ø80mm		Ø95mm		Ø110mm		Ø130mm	
Max Piston Stroke	30mm							
Pressure Gauge Type	Pointer	Digital	Pointer	Digital	Pointer	Digital	Pointer	Digital
Pressurization Method	Manual pressurization / manual gradual pressurization							
Pressure Stability	≤1MPa/10min							
Worktable Diameter	Ø90mm		Ø105mm		Ø120mm		Ø140mm	
Workspace	W 80×150mm		W 80×150mm		W 92×160mm		W 106×160mm	
Overall Dimensions	250×180×420mm		250×180×420mm		275×210×470mm		300×220×450mm	
Weight	~42kg		~42kg		~58kg		~78kg	
Configuration Description	Optional molds. If higher pressure accuracy is required, we recommend purchasing the EPPM-4D digital display model							

Applications

1. Widely used in new materials, superconductors, powder ceramics, new energy sources, batteries, construction materials, and metallurgical powders.
2. Compresses various powder materials like potassium bromide (KBr), sodium chloride (NaCl), and aluminum oxide (Al₂O₃).
3. Produces pellets, columns, and special-shaped bodies for scientific research.
4. Compatible with calcium iron analysis, infrared spectroscopy (IR), and X-ray fluorescence (XRF) analyzers.
5. Suitable for testing the compressive strength of various objects.

Disclaimer: ACS Material, LLC believes that the information in this Technical Data Sheet is accurate and represents the best and most current information available to us. ACS Material makes no representations or warranties either express or implied, regarding the suitability of the material for any purpose or the accuracy of the information contained within this document. Accordingly, ACS Material will not be responsible for damages resulting from use of or reliance upon this information.