



Technical Data Sheet

ACS Material Graphite Fluoride

Table of Contents

[1 – Preparation Method](#)

[2 – Characterizations](#)

[3 – Application Fields](#)

Contact Information:

Manufacturer: ACS Material, LLC.

Address: 959 E Walnut St. Suite 100

Pasadena, CA 91106, USA

Phone: (866)-227-0656

Fax: (781)-518-0284

E-Mail: contact@acsmaterial.com

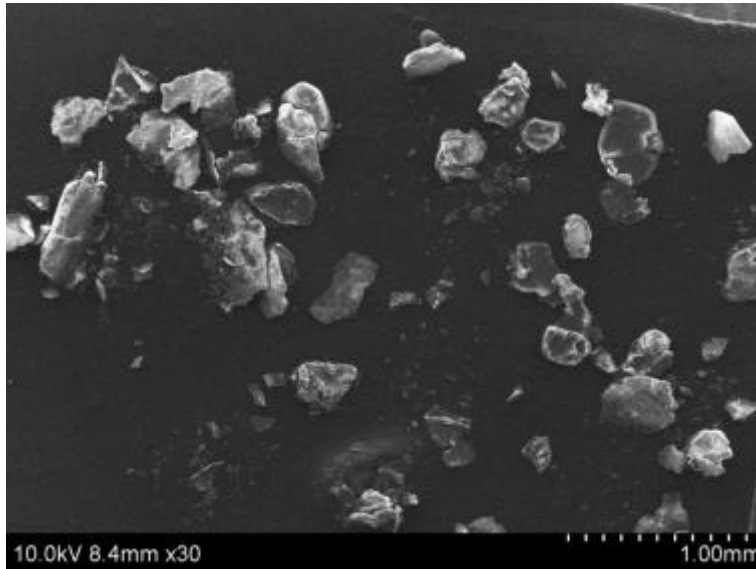
Revision: 090817

1. Preparation Method

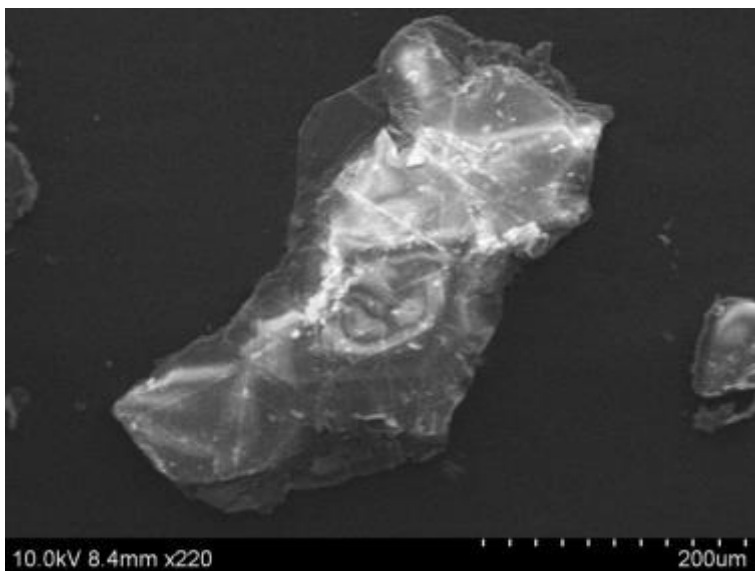
High-temperature reaction of fluorine gas with graphite

2. Characterizations

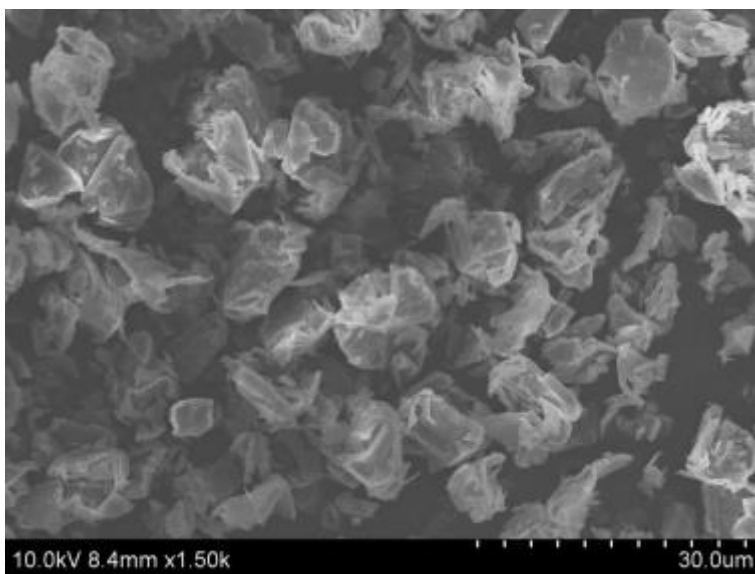
Product No.:	GT1FF012	GT1F0020	GT1FS012
Appearance:	Flake	Powder	Synthetic/Artificial graphite (Powder)
Color:	Grey	Grey/ White	Grey/ White
Average Size:	200-500 μm	1-10 μm	10-20 μm
F (wt.%):	56-61%	56-61%	60-65%
Electrical Resistivity:	$\sim 10^{11} \Omega \cdot \text{m}$	$\sim 10^{11} \Omega \cdot \text{m}$	$\sim 10^{11} \Omega \cdot \text{m}$
F/C Ratio:	0.8~1.1	0.8~1.1	0.8~1.1



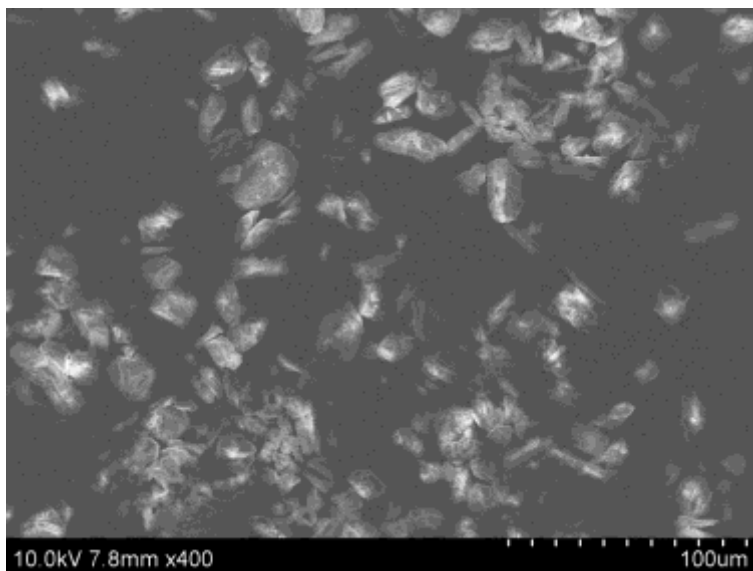
Typical SEM Image of ACS Material Graphite Fluoride (Flake)



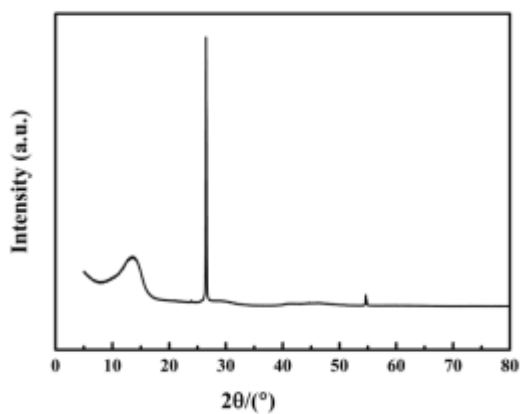
Typical SEM Image of ACS Material Graphite Fluoride (Flake)



Typical SEM Image of ACS Material Graphite Fluoride (Powder)



Typical SEM Image of ACS Material Graphite Fluoride (Synthetic/Artificial graphite)



Typical XRD Analysis of ACS Material Flake Graphite Fluoride

3. Application Fields

- 1) High energy density cathode material in lithium batteries
- 2) Reduction additive for lubricants
- 3) Weather-resistant additive for paints
- 4) Oxidizing agent and combustion modifier in rocket propellants and pyrolants

Disclaimer: ACS Material, LLC believes that the information in this Technical Data Sheet is accurate and represents the best and most current information available to us. ACS Material makes no representations or warranties either express or implied, regarding the suitability of the material for any purpose or the accuracy of the information contained within this document. Accordingly, ACS Material will not be responsible for damages resulting from use of or reliance upon this information.