



ACS Material Equipment Series

PressPro™ Protective Small Tonnage Powder Press Machine

- 1 – Product Composition
- 2 – Product Features
- 3 – Product Specifications
- 4 – Product Applications

Contact Information:

ACS Material, LLC

Address: 959 E Walnut St., Suite 100

Pasadena, CA 91106, USA

Phone: (866) 227-0656

Fax: (781) 518-0284

E-Mail: contact@acsmaterial.com

Revision: 050224

Product Composition

1. Main Machine
2. Molds - Optional



Photo of Press Machine

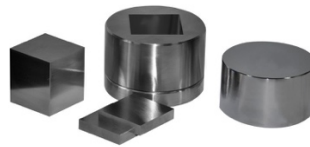


Photo of Optional Mold

Product Features

The Protective Pointer Manual Pellet Press Series (SKU: EPPMPP) is an upgraded version based on the original EPPM-4 series hydraulic press, with added safety protection features. It meets export standards for countries like the United States and Europe and is designed for pressing brittle materials or molds requiring high pressure. It is suitable for laboratories with high safety requirements.

The Protective Digital Display Manual Pellet Press Series (SKU: EPPMPD) is an upgrade of the original series hydraulic press, featuring a pressure display unit using the digital pressure gauge. It directly displays tonnage with a precision of 0.01t, making it ideal for users requiring high-pressure control accuracy.

Product Specifications

Product Name	PressPro™ Protective Manual Powder Press Machine									
Model	EPPM-PP15	EPPM-PD15	EPPM-PP24	EPPM-PD24	EPPM-PP30	EPPM-PD30	EPPM-PP40	EPPM-PD40	EPPM-PP60	EPPM-PD60
Pressure Range	0-15T / 30MPa		0-24T / 34MPa		0-30T / 31.5MPa		0-40T / 30MPa		0-60T / 34MPa	
Pressure Conversion	1Mpa = 0.5T 1t = 2 MPa		1Mpa = 0.7T 1t = 1.42 MPa		1Mpa = 0.95T 1t = 1.05 MPa		1Mpa = 1.33T 1t = 0.75 MPa		1Mpa = 1.76T 1t = 0.56 MPa	
Piston Diameter	Ø80mm		Ø95mm		Ø110mm		Ø130mm		Ø150mm	
Max Piston Stroke	< 30mm				< 40mm		< 50mm			
Pressure Gauge Type*	Pointer	Digital	Pointer	Digital	Pointer	Digital	Pointer	Digital	Pointer	Digital
Pressurization Method	Manual pressurization / manual gradual pressurization									
Pressure Stability	≤1MPa/10min									
Worktable Diameter	Ø88mm		Ø128mm		Ø128mm		Ø148mm		Ø168mm	
Workspace	W 80×150mm		W 112×160mm				W 146×180mm		W 200 ×210mm	
Overall Dimensions	260×180×420mm		310×200×440mm				360×225×490mm		440×240×530mm	
Weight	~43kg		~72kg				~96kg		~142kg	
Configuration Description	Optional molds. If higher pressure accuracy is required, we recommend purchasing the EPPM-PD digital display model									

* Pointer Pressure Gauge Display Accuracy: 1 MPa

* Digital Pressure Gauge Display Accuracy: 0.01t or 0.01 MPa

Applications

1. Widely used in new materials, superconductors, powder ceramics, new energy sources, batteries, construction materials, and metallurgical powders.
2. Compresses various powder materials like potassium bromide (KBr), sodium chloride (NaCl), and aluminum oxide (Al₂O₃).
3. Produces pellets, columns, and special-shaped bodies for scientific research.
4. Compatible with calcium iron analysis, infrared spectroscopy (IR), and X-ray fluorescence (XRF) analyzers.
5. Suitable for testing the compressive strength of various objects.

Disclaimer: ACS Material, LLC believes that the information in this Technical Data Sheet is accurate and represents the best and most current information available to us. ACS Material makes no representations or warranties either express or implied, regarding the suitability of the material for any purpose or the accuracy of the information contained within this document. Accordingly, ACS Material will not be responsible for damages resulting from use of or reliance upon this information.