



Technical Data Sheet

ACS Material Mesoporous Silica Molecular Sieve SBA-15

Table of Contents

[1 – Preparation Method](#)

[2 – Characterizations](#)

[3 – Application Fields](#)

Contact Information:

Manufacturer: ACS Material, LLC.

Address: 959 E Walnut St. Suite 100

Pasadena, CA 91106, USA

Phone: (866)-227-0656

Fax: (781)-518-0284

E-Mail: contact@acsmaterial.com

Revision: 113023

1. Preparation Method

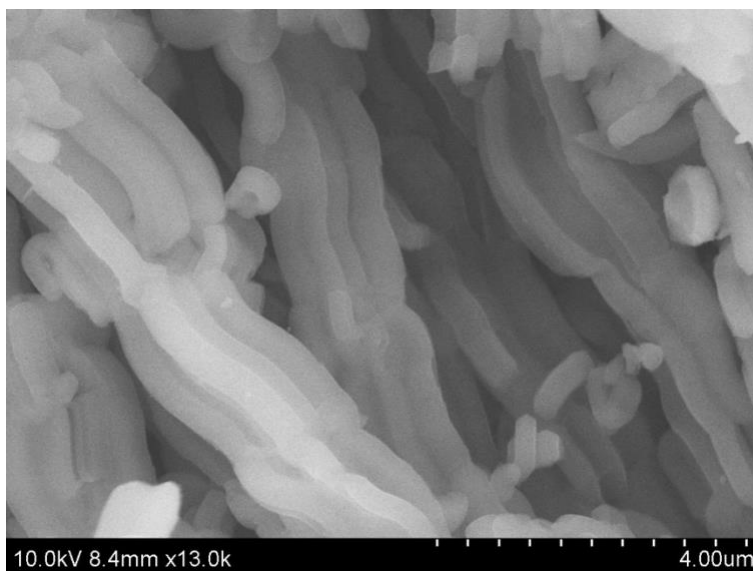
Hydrothermal Method

2. Characterizations

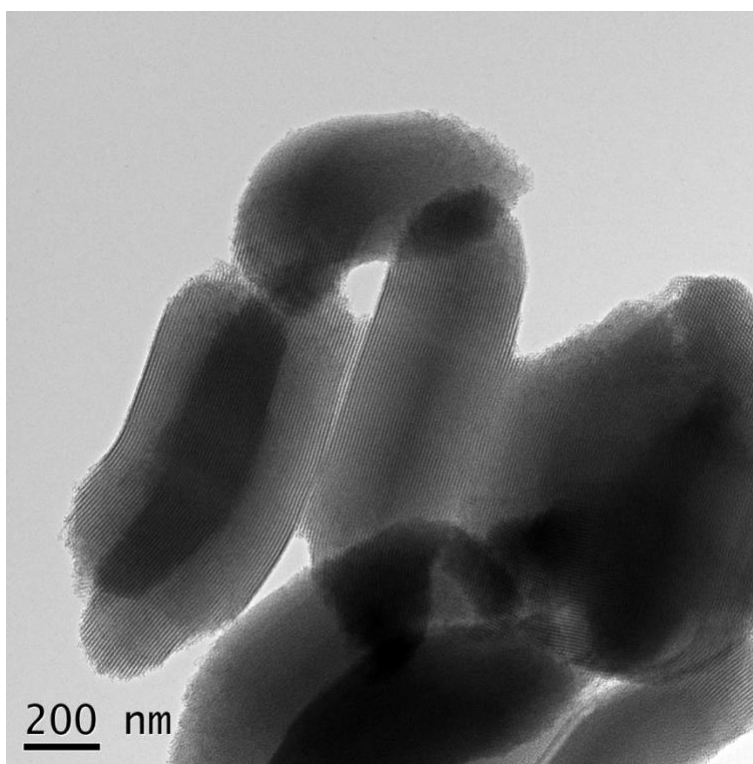
Appearance:	White Powder
Particle Size (μm):	1~4
Pore Diameter (nm):	6~11
Pore Volume (cm^3/g):	1.46
BET surface area (m^2/g):	≥ 550
Na_2O (%):	≤ 0.1
Comparative Crystallinity (%):	≥ 90
Bulk Density (g/cm^3)	0.067
Tap Density (g/cm^3)	0.145



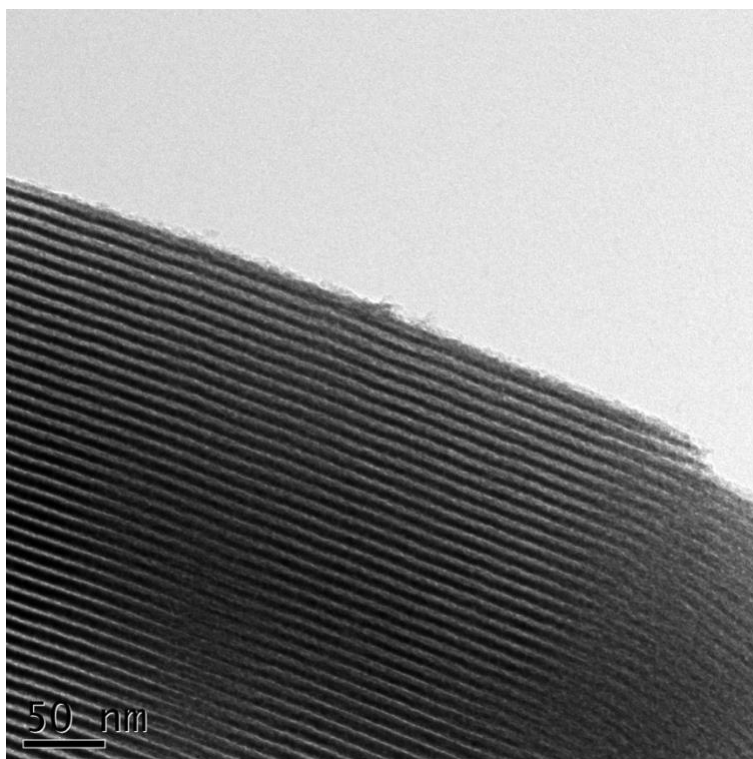
Typical SEM Image (01) of ACS Material Mesoporous Silica Molecular Sieve SBA-15



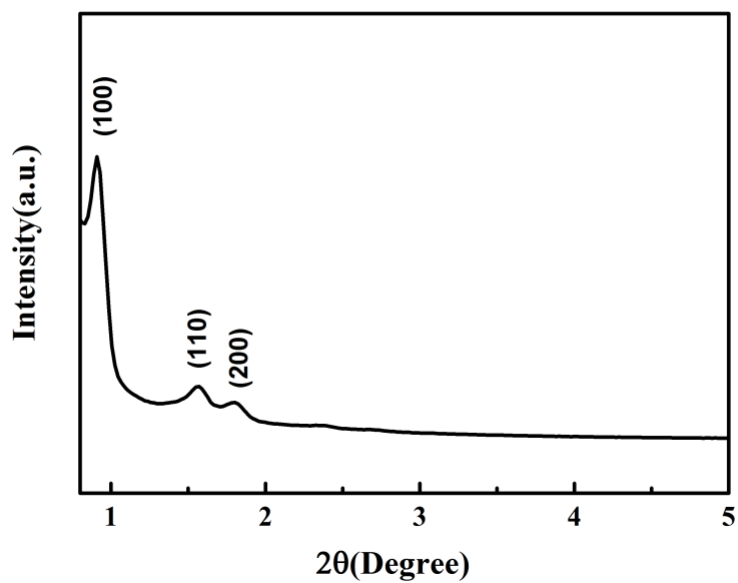
Typical SEM Image (02) of ACS Material Mesoporous Silica Molecular Sieve SBA-15



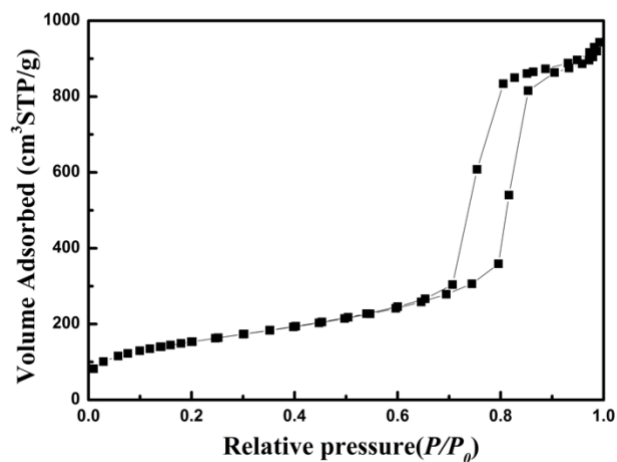
Typical TEM Image (01) of ACS Material Mesoporous Silica Molecular Sieve SBA-15



Typical TEM Image (02) of ACS Material Mesoporous Silica Molecular Sieve SBA-15



Typical XRD Analysis of ACS Material Mesoporous Silica Molecular Sieve SBA-15



Typical BET Analysis of ACS Material Mesoporous Silica Molecular Sieve SBA-15

3. Application Fields

- 1) Catalyst carrier
- 2) As a templating agent
- 3) Nanomaterials

Disclaimer: ACS Material, LLC believes that the information in this Technical Data Sheet is accurate and represents the best and most current information available to us. ACS Material makes no representations or warranties either express or implied, regarding the suitability of the material for any purpose or the accuracy of the information contained within this document. Accordingly, ACS Material will not be responsible for damages resulting from use of or reliance upon this information.