



ACS Material Equipment Series

PressPro™ Two Cylinder Small Tonnage Powder Press Machine

- 1 – Product Composition
- 2 – Product Features
- 3 – Product Specifications
- 4 – Product Applications

Contact Information:

ACS Material, LLC

Address: 959 E Walnut St., Suite 100

Pasadena, CA 91106, USA

Phone: (866) 227-0656

Fax: (781) 518-0284

E-Mail: contact@acsmaterial.com

Revision: 050224

Product Composition

1. Main Machine
2. Molds - Optional



Photo of Press Machine

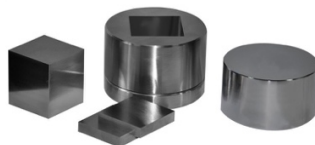


Photo of Optional Mold

Product Features

The 2 Cylinder Pointer Manual Pellet Press Series (SKU: EPPM2P) features the advantages of low tonnage, compact size, light weight, and easy portability, making it ideal for use inside glove boxes. With specific molds, it can compress various powder materials for applications in research, teaching, testing, catalysis, pharmaceuticals, and other fields.

The 2 Cylinder Digital Display Manual Pellet Press Series (SKU: EPPM2D) is an upgrade of the original press, integrating a pressure display unit using the digital pressure gauge. It directly displays tonnage without the need for conversion, with a precision of 0.01t, making it especially suitable for users who require high precision pressure control.

Product Specifications

Product Name	PressPro™ Two Cylinder Small Tonnage Powder Press Machine									
Model	EPPM-2P02	EPPM-2D02	EPPM-2P03	EPPM-2D03	EPPM-2P05	EPPM-2D05	EPPM-2P12	EPPM-2D12	EPPM-2P15	EPPM-2D15
Pressure Range	0-2T (0-25MPa)	0.01-2T	0-3T (0-28.8MPa)	0.01-3T	0-5T (0-31.4MPa)	0.01-5T	0-12T (0-30MPa)	0.01-12T	0-15T (0-30MPa)	0.01-15T
Pressure Conversion	1Mpa = 0.08T	-	1Mpa = 0.1T	-	1Mpa = 0.16T	-	1Mpa = 0.4T	-	1Mpa = 0.5T	-
Piston Diameter	Ø32mm		Ø35mm		Ø45mm		Ø70mm		Ø80mm	
Max Piston Stroke	30mm									
Pressure Gauge Type	Pointer	Digital	Pointer	Digital	Pointer	Digital	Pointer	Digital	Pointer	Digital
Pressurization Method	Manual pressurization / manual gradual pressurization									
Pressure Stability	≤1MPa/10min									
Worktable Diameter	Ø45mm		Ø80mm		Ø80mm		Ø80mm		Ø90mm	
Workspace	W 90×120mm		W 90×120mm		W 90×120mm		W 92×150mm		W 140 ×150mm	
Overall Dimensions	210×170×370mm		210×170×370mm		210×170×370mm		230×160×380mm		275×200×420mm	
Weight	~11kg		~11kg		~23kg		~28kg		~53kg	
Configuration Description	Optional molds. If higher pressure accuracy is required, we recommend purchasing the EPPM-2D digital display model									

Applications

1. Widely used in new materials, superconductors, powder ceramics, new energy sources, batteries, construction materials, and metallurgical powders.
2. Compresses various powder materials like potassium bromide (KBr), sodium chloride (NaCl), and aluminum oxide (Al₂O₃).
3. Produces pellets, columns, and special-shaped bodies for scientific research.
4. Compatible with calcium iron analysis, infrared spectroscopy (IR), and X-ray fluorescence (XRF) analyzers.
5. Suitable for testing the compressive strength of various objects.

Disclaimer: ACS Material, LLC believes that the information in this Technical Data Sheet is accurate and represents the best and most current information available to us. ACS Material makes no representations or warranties either express or implied, regarding the suitability of the material for any purpose or the accuracy of the information contained within this document. Accordingly, ACS Material will not be responsible for damages resulting from use of or reliance upon this information.