



Technical Data Sheet

ACS Material Py-urea-COF (Water uptake COF)

Table of Contents

[1 – Characterizations](#)

[2 – Application Fields](#)

[3 – Storage Conditions](#)

Contact Information:

Manufacturer: ACS Material, LLC.

Address: 959 E Walnut St. Suite 100,

Pasadena, CA 91106, USA

Phone: (866)-227-0656

Fax: (781)-518-0284

E-Mail: contact@acsmaterial.com

Revision: 091423

1. Characterizations

Product Name:	Py-urea-COF (water uptake COF)
Appearance:	Yellow Powder
Specific Surface Area:	~25.7 m ² /g
Pore Size:	~17.88nm

Note: The BET data is a single measurement data and is allowed to float between different batches.

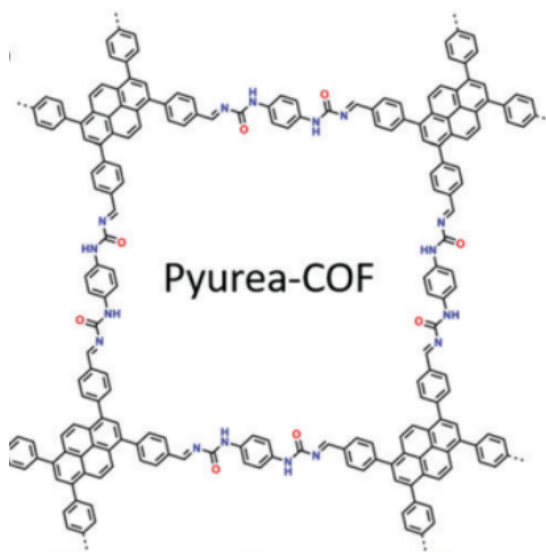
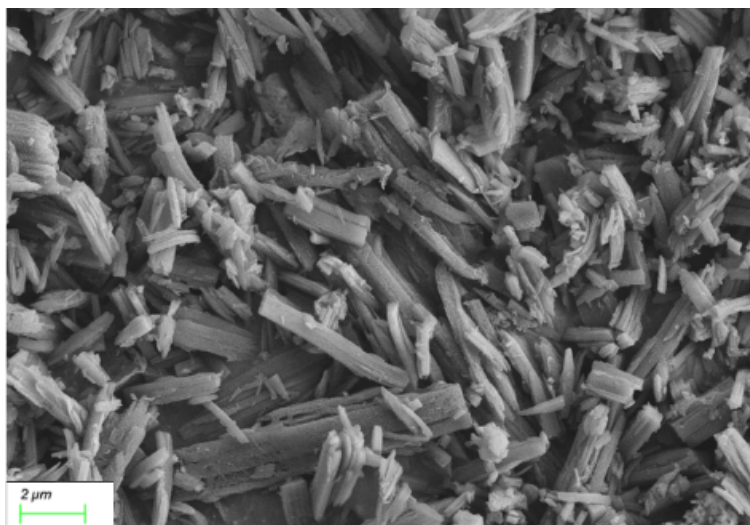
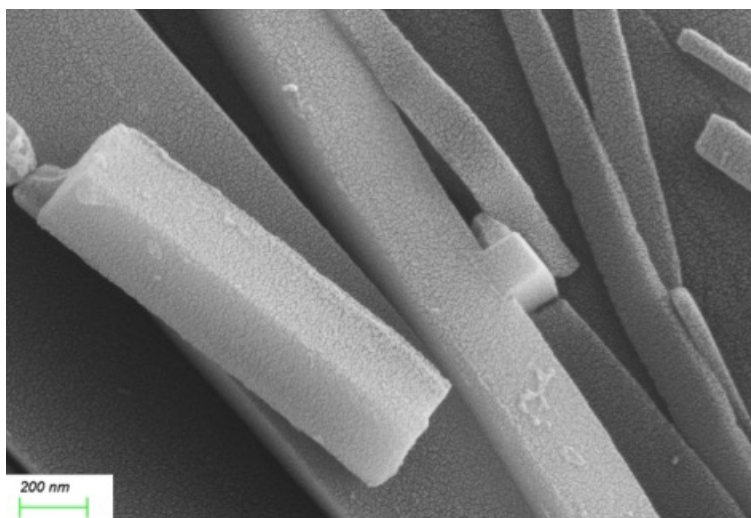


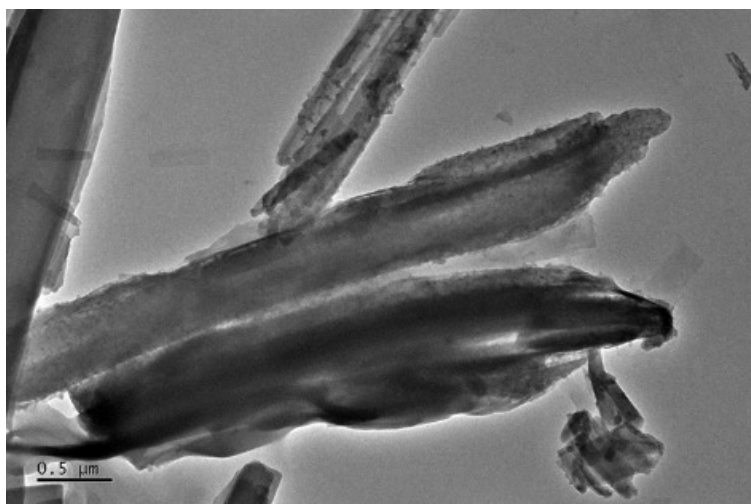
Fig.1 Structural diagram of Py-urea-COF (water uptake COF)



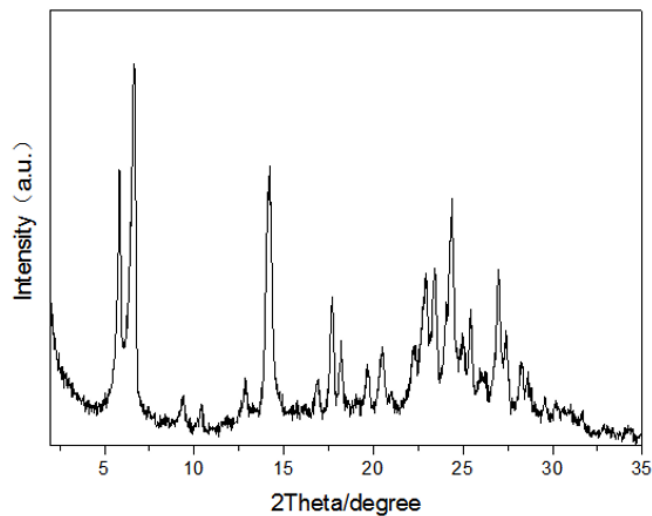
Typical SEM Image (1) of ACS Material Py-urea-COF(water uptake COF)



Typical SEM Image (2) of ACS Material Py-urea-COF(water uptake COF)



Typical TEM Image (1) of ACS Material Py-urea-COF(water uptake COF)



XRD pattern of ACS Material ACS Material Py-urea-COF(water uptake COF)

2. Application Fields

Water content detection and water adsorption, etc.

3. Storage Conditions

Sealed, avoid light, and keep dry at room temperature. Expiry date: Half a year.

Disclaimer: ACS Material, LLC believes that the information in this Technical Data Sheet is accurate and represents the best and most current information available to us. ACS Material makes no representations or warranties either express or implied, regarding the suitability of the material for any purpose or the accuracy of the information contained within this document. Accordingly, ACS Material will not be responsible for damages resulting from use of or reliance upon this information.